

Workhorse H-ADCP

Horizontal Acoustic Doppler Current Profilers

TECHNICAL SPECIFICATIONS



Cell Size	H-ADCP 300 300 kHz nominal (LR mode*) 148 m (187 m)				H-ADCP 600 600 kHz nominal (LR mode*) 60 m (75 m)				H-ADCP-N 300 300 kHz nominal (LR mode*) 178 m (221 m)					
	Range (m)		Std Dev (cm/s)		Range (m)		Std Dev (cm/s)		Range (m)		Std Dev (cm/s)			
	Nom.	Long	Nom.	Long	Nom.	Long	Nom.	Long	Nom.	Long	Nom.	Long		
Horizontal Resolution	0.5 m				41	54	11.03	23.14						
	1.0 m		99	134	10.97	23.01	45	59	5.66	11.87	126	164	13.55	28.44
	2.0 m		108	145	5.62	11.74	49	64	2.89	6.05	136	176	6.94	14.51
	4.0 m		120	158	2.87	6.02	54	70	1.36	2.83	149	190	3.55	7.44
	8.0 m		134	173	1.36	2.89	60	75	0.6	1.22	163	205	1.73	3.68
	16.0 m		148	187	0.6	1.32					178	221	0.77	1.65
	ARL ¹		12/1 (range/total depth)		12/1 (range/total depth)				19/1 (range/total depth)					
Profile Parameters	Velocity accuracy		±0.5% ±5mm/sec		±0.25% ±2.5mm/sec				±0.5% ±5mm/sec					
	Velocity resolution		0.1cm/s		0.1cm/s				0.1cm/s					
	Velocity range		±5m/s (default), ±20m/s (max)		±5m/s (default), ±20m/s (max)				±5m/s (default), ±20m/s (max)					
	Number of depth cells		1-128		1-128				1-128					
	Error velocity data rejection		Yes; required on a single-ping basis to screen errors from passing vessels		Yes; required on a single-ping basis to screen errors from passing vessels				Yes; required on a single-ping basis to screen errors from passing vessels					
Transducer and Hardware	Beam width		2.1°		1.3°				1.1°					
	Beam angle		25°		25°				20°					
System Weight	In air		16kg		14kg				72.1kg					
	In water		10kg		8.6kg				56.2kg					
Environmental	Standard depth rating		200m		200m				200m					
	Operating temperature		-5° to 45°C		-5° to 45°C				-5° to 45°C					
	Storage temperature		-30° to 60°C		-30° to 60°C				-30° to 60°C					
Communications	Serial port is switch-selectable for RS-232 or RS-422, ASCII or binary output at 1200-115,200 baud													
Power	DC input		20-50VDC		20-50VDC				20-50VDC					
Standard Sensors	Temperature (mounted on transducer)		Range -5° to 45°C, Precision ±0.4°C, Resolution 0.01°											
	Compass (fluxgate type, includes built-in field calibration feature)		Accuracy ±2°, Precision ±0.5°, Resolution 0.01°, Maximum tilt ±15°											
Available Options	• Memory: 2 x 2GB PCMCIA slots, total 4GB • Pressure sensor													
	• Directional waves array (available on the 300 kHz H-ADCP-N only)													
Dimensions	Special configuration drawings available on request													

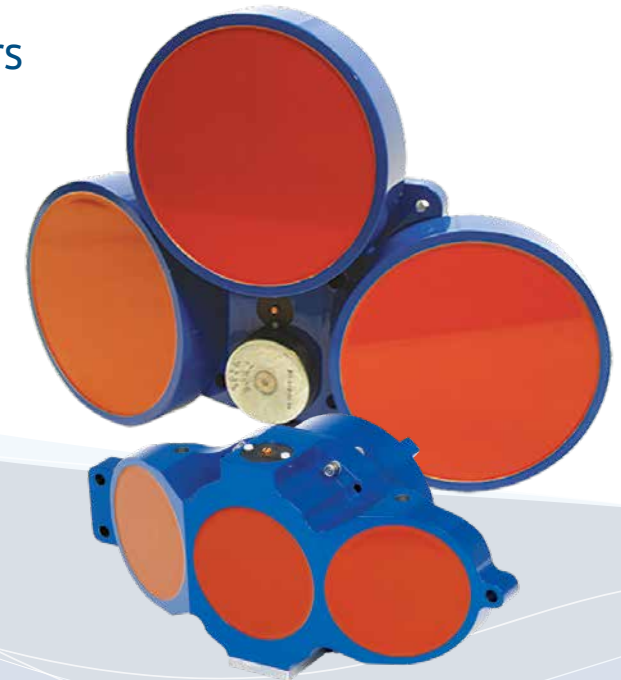
1 User's choice of cell size is not limited to the typical values specified.
 2 Range, which depends on cell size, is specified here for broadband/narrowband mode at 5° C, typical ocean backscatter, and nominal 48VDC input power.
 3 Broad bandwidth mode single-ping standard deviation.
 4 Range, which depends on cell size, is specified here for narrow bandwidth mode at 5° C, typical ocean backscatter, and nominal 48VDC input power. Default configuration in LR mode (WB=1).
 5 @ 60° magnetic dip angle. 0.5G total field.
 * Aspect ratio limitation.

Workhorse H-ADCP

Horizontal Acoustic Doppler Current Profilers

Teledyne RD Instruments' **Workhorse Horizontal Acoustic Doppler Current Profiler (H-ADCP)** is an acoustic monitoring system that "looks" out horizontally from its mounting structure to measure near-surface water currents and optional multi-directional waves.

This unique instrument utilizes Teledyne RDI's Broadband signal processing to obtain an optimal combination of range, resolution, and data quality which cannot be obtained using narrowband products. The Workhorse H-ADCP measures currents at 128 individual points at up to 200 meters horizontal range, providing a detailed illustration of the complete flow structure centered at a single depth. The 300 kHz H-ADCP can be upgraded to add wave height and direction capabilities, fulfilling all your monitoring needs.



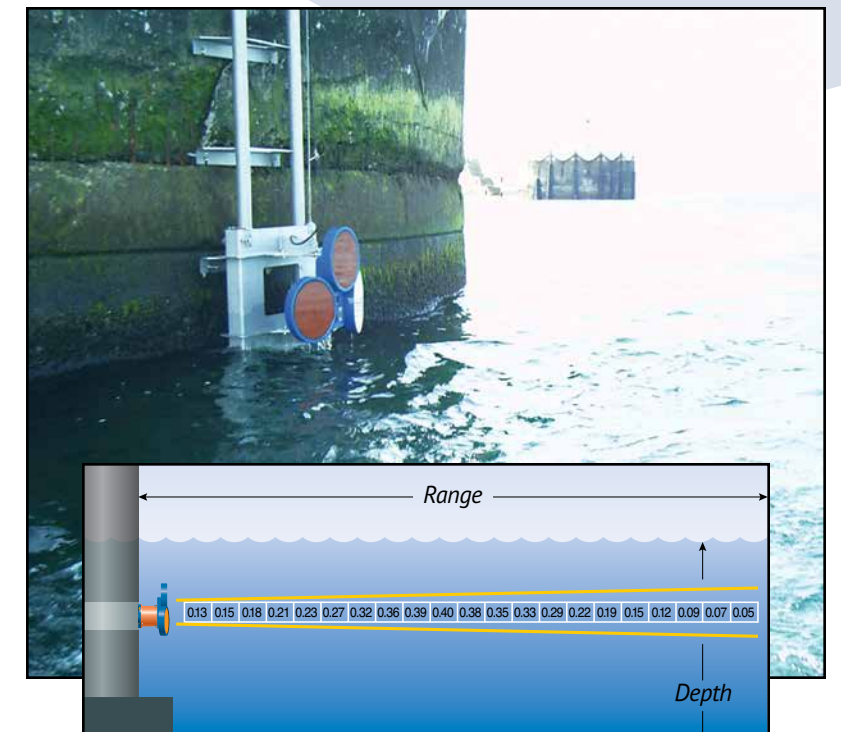
PRODUCT FEATURES

Operational Advantages

- Increased Range
- Improved Data Reliability
- Combined Current and Waves
- Real-Time Data
- Increased Data
- Robust Construction
- Ease of Operation
- Remote Measurements
- Ease of Mounting

Applications

- Offshore Oil and Gas Platforms
- Renewable Energy
- Vessel Traffic Safety

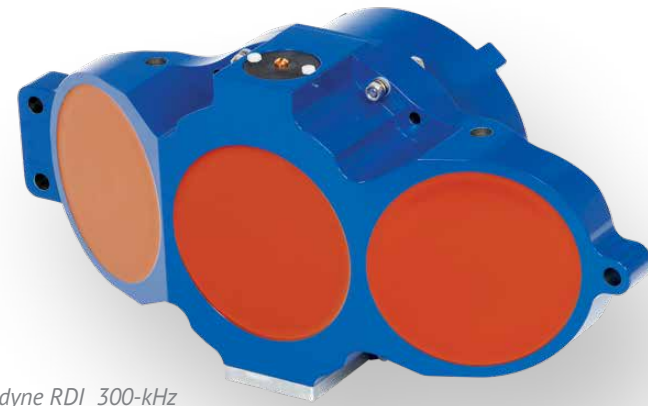


The H-ADCP looks horizontally across a body of water measuring current and directional waves at numerous locations.

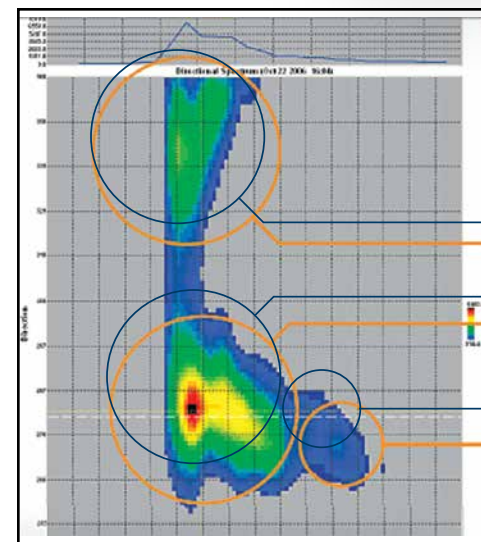
Horizontal Current Profiling and Waves Measurement in one package.

NINE KEY OPERATIONAL ADVANTAGES

- **Increased Range:** Our 300 kHz H-ADCP combines a lower frequency with a narrow 1° beam to ensure an unparalleled profiling range of 200 meters or more for those applications requiring extended range. For smaller waterways our higher-frequency 600 kHz system delivers up to 75 meters horizontal range.
- **Improved Data Reliability:** Teledyne RD Instruments' unique three-beam configuration provides a third beam for quality assurance, as well as data redundancy in the event of a blocked or damaged beam, ensuring the unmatched delivery of accurate data.
- **Combined Current and Waves:** The narrow 1° beam combined with extended range capability allows the 300 kHz H-ADCP to be upgraded to include our patented multi-directional waves-measurement option, providing you with a complete monitoring solution.
- **Real-Time Data:** The H-ADCP provides unobtrusive real-time data for real-time decision-making.
- **Increased Data:** The H-ADCP provides users with the capability to measure from 1 to 128 data points across a body of water, providing a highly detailed and accurate profile of the flow structure.
- **Robust Construction:** The offshore environment is a demanding place, so we've designed the H-ADCP to rise to the challenge. The unit's sturdy design ensures a long life, and no calibration is ever required.
- **Ease of Operation:** The H-ADCP is pre-configured for simple operation to ensure optimum performance with a minimal learning curve. System operation is further aided by an easy-to-use installation guide and intuitive Windows™ software.
- **Remote Measurements:** The H-ADCP is ideal for mounting to large structures because measurements are made remotely, at ranges well beyond the influence of the structure on nearby current and wave fields.
- **Ease of Mounting:** Horizontal orientation means no cables are exposed to damage on the seafloor.



The Teledyne RDI 300-kHz Workhorse H-ADCP delivers up to 180 m of horizontal profiling range.

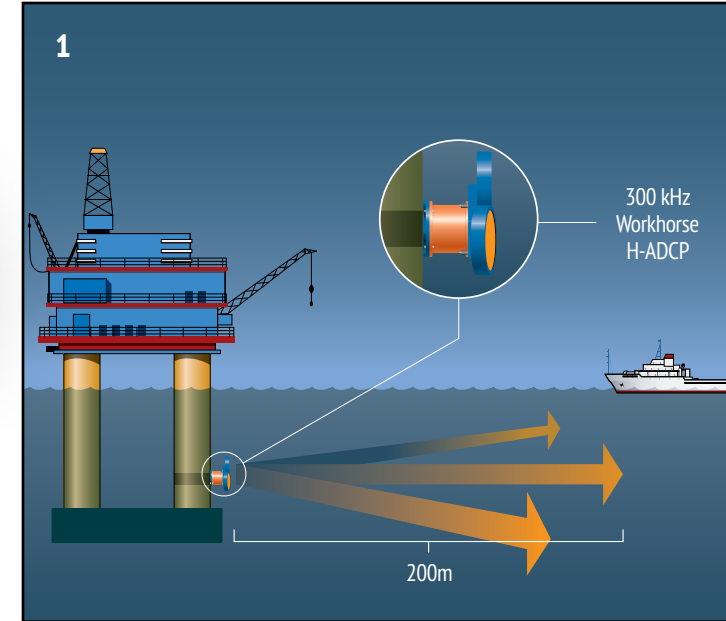


H-ADCP Waves Array data from Benthos Chile

H-ADCP Waves Data Directional spectrum shows "multi-directional" swell.

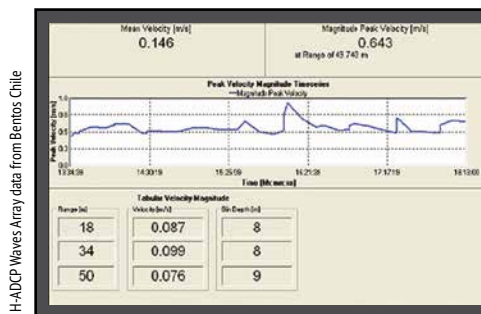


The Teledyne RD Instruments 300 kHz Workhorse H-ADCP-N delivers up to 220 m of horizontal profiling range and optional multi-directional waves measurement.



PRODUCT FEATURES

- 1 Offshore Oil and Gas Platforms:** The 300 kHz H-ADCP collects critical surface current and multi-directional waves data for a real-time understanding of your offshore environment and the elements affecting your structure and production schedule.
- 2 Renewable Energy:** The 300 kHz H-ADCP can be mounted on an offshore structure to provide real-time current and wave data for field site assessments and environmental monitoring.
- 3 Vessel Traffic Safety:** The Workhorse H-ADCP provides port managers and pilots with the real-time environmental data needed for vessel traffic safety, efficiency, and ship-docking applications.



H-ADCP Waves Array data from Benthos Chile

